

**PLATIN**  
★★★ TYRES

**Perfection in detail**  
Summer tyres for cars and SUV



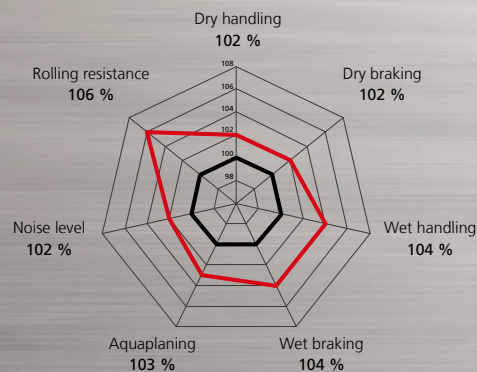
# PLATIN RP 320 SUMMER



## Summer tyres for cars

- Better grip and improved handling on dry roads due to the asymmetrically arranged profile blocks
- Increased resistance to aquaplaning and improved grip in the wet thanks to the broad middle grooves and a narrow groove next to the outer shoulder
- Optimal braking performance and improve handling through the use of sipes with multiple angles in the profile shoulders
- Available in 19 sizes, 13–15 inch

### Development priorities



— RP 320 SUMMER  
— RP 310 Diamant (previous model = 100 %)

**PLATINI**



C-D

B

B

## The profile in detail



### Improved grip and better handling

Strong asymmetrically arranged blocks increase the stiffness of the profile and the broad middle belt structure improves braking performance



### Low noise level

Profile webs (so-called „Tie Bars“) in the inner shoulder serve to reduce noise



### High level of safety on wet roads

Broad middle grooves in the profile lead to efficient water drainage



### Better aquaplaning performance and improved adhesion of the tyres in the wet

Reduced risk of aquaplaning due to an additional narrow groove next to the outer shoulder



### High wet grip for optimal handling and braking performance

Sipes with multiple angles in the profile shoulders act like windscreen wipers when braking and the zigzag grooved indentations in the middle belts take out water and improve the handling in the wet

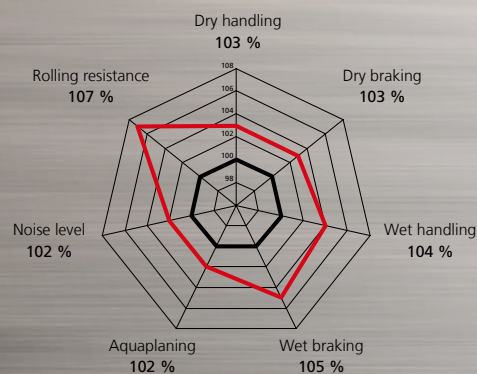
# PLATIN RP 420 SUMMER



## Summer tyres for cars and SUV

- High reserves of safety in the wet thanks to the circumferential drainage grooves and hydrodynamically-shaped transverse grooves in the shoulder area
- Superlative braking and better performance on wet roads through curved sipes in the inner and outer shoulders
- Reduced rolling resistance and better braking behaviour in the wet with a high proportion of silica and new polymers
- Available in 54 sizes, 15–19 inch

### Development priorities



— RP 420 SUMMER  
— RP 410 Diamant (previous model = 100 %)

**PLATIN**



C-D



B



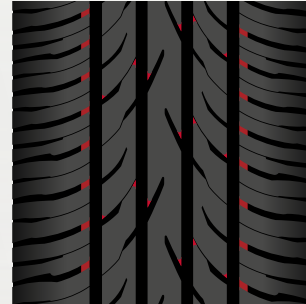
B

## The profile in detail



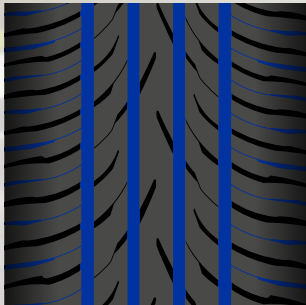
### Improved grip and better handling

A central middle belt increases the stiffness of the profile and improves handling



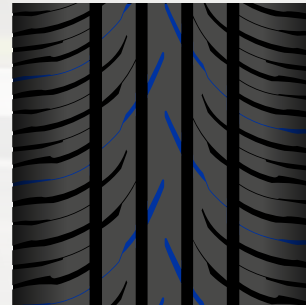
### Low level of noise

Slanted block corners and profile webs ("Tie Bars") reduce the formation of noise



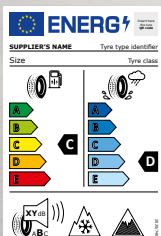
### High degree of safety on wet roads

Four circumferential drainage grooves improve the removal of water and hydrodynamically-shaped transverse grooves in the shoulder area provide for water transport to the outside



### Excellent braking performance on wet roads

Curved sipes in the inner and outer shoulders in conjunction with grooves in the middle belt improve performance on wet roads



### Improved EU label values

on more than 60 % of the dimensions

# Perfection down to the smallest detail

## PLATIN Performance Indicator – PPI for more safety

The new Platin Performance Indicator with WET and DRY stages offers yet more safety: If both indicator levels are fully visible this confirms optimal performance of the tyre on wet and dry roads.



When the WET indicator disappears with 3 mm of tread depth remaining we recommend a tyre change due to the loss of optimal performance in the wet.



When the DRY indicator disappears this indicates that the tyre has reached the minimum legal tread depth of 1.6 mm. A tyre change is now urgently necessary.

## PLATIN logo on the tread

Reinforced branding with the PLATIN logo in the middle belt makes it easier to find the tyres in the warehouse.



## Innovative sidewall design



### Speed index

The maximum permissible speeds on the sidewall make assignment much easier in the warehouse, on the vehicle and for the customer.



### Summer TWI

No chance for aquaplaning! We recommend a remaining tread depth of 3 mm for optimal performance in the wet. You should get new tyres once the summer TWI is at the same level as the profile tread.



### Quality Icon

PLATIN quality tyres stand for innovative tyre technology with an exceptionally good price-performance ratio. PLATIN tyres have constantly been developed to the current state of the technical art since 1987 and are produced by leading and reputable tyre manufacturers.

## PLATIN RP 320 SUMMER

| 13 inch          | EU tyre label* |            |
|------------------|----------------|------------|
| 155/70 R 13 75 T | D/B/B(70)      | <b>NEW</b> |
| 155/80 R 13 79 T | D/B/B(70)      | <b>NEW</b> |
| 175/70 R 13 82 T | D/B/B(70)      | <b>NEW</b> |

| 14 inch          | EU tyre label* |            |
|------------------|----------------|------------|
| 155/65 R 14 75 T | D/B/B(70)      | <b>NEW</b> |
| 165/60 R 14 75 H | D/B/B(70)      | <b>NEW</b> |
| 165/65 R 14 79 T | D/B/B(70)      | <b>NEW</b> |
| 165/70 R 14 81 T | D/B/B(70)      | <b>NEW</b> |
| 175/65 R 14 82 T | C/B/B(70)      | <b>NEW</b> |
| 175/70 R 14 84 T | C/B/B(70)      | <b>NEW</b> |
| 185/60 R 14 82 H | D/B/B(70)      |            |
| 185/65 R 14 86 H | D/B/B(70)      |            |

| 15 inch             | EU tyre label* |            |
|---------------------|----------------|------------|
| 165/65 R 15 81 H    | C/B/B(70)      | <b>NEW</b> |
| 175/65 R 15 84 H    | D/B/B(70)      | <b>NEW</b> |
| 185/60 R 15 88 H XL | C/B/B(71)      |            |
| 185/65 R 15 88 H    | C/B/B(70)      |            |
| 195/60 R 15 88 H    | D/B/B(71)      |            |
| 195/60 R 15 88 V    | D/B/B(71)      |            |
| 195/65 R 15 91 H    | C/B/B(71)      |            |
| 195/65 R 15 91 V    | C/B/B(71)      |            |

## PLATIN RP 420 SUMMER

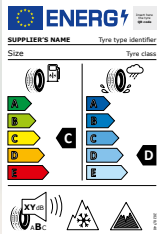
| 15 inch          | EU tyre label* |  |
|------------------|----------------|--|
| 185/55 R 15 82 V | C/B/B(70)      |  |
| 195/50 R 15 82 V | C/B/B(71)      |  |
| 195/55 R 15 85 V | C/B/B(71)      |  |
| 205/60 R 15 91 V | C/B/B(71)      |  |
| 205/65 R 15 94 V | C/B/B(71)      |  |

| 16 inch                | EU tyre label* |            |
|------------------------|----------------|------------|
| 195/45 R 16 84 V XL FR | C/B/B(72)      |            |
| 195/50 R 16 88 V XL    | C/B/B(72)      | <b>NEW</b> |
| 195/55 R 16 87 V       | C/B/B(71)      |            |
| 205/45 R 16 87 W XL FR | D/B/B(72)      |            |
| 205/50 R 16 87 W       | D/B/B(71)      |            |
| 205/55 R 16 91 V       | C/B/B(71)      |            |
| 205/55 R 16 94 W XL    | C/B/B(72)      |            |
| 205/60 R 16 92 V       | C/B/B(71)      |            |
| 215/45 R 16 90 V XL FR | C/B/B(72)      | <b>NEW</b> |
| 215/55 R 16 97 V XL    | C/B/B(72)      |            |
| 215/60 R 16 99 H XL    | C/B/B(72)      | <b>NEW</b> |
| 215/65 R 16 98 H FR    | C/B/B(71)      | <b>NEW</b> |
| 225/50 R 16 92 Y       | D/B/B(71)      |            |
| 225/55 R 16 99 Y XL    | C/B/B(72)      |            |

| 17 inch                 | EU tyre label* |            |
|-------------------------|----------------|------------|
| 205/40 R 17 84 Y XL FR  | D/B/B(71)      |            |
| 205/45 R 17 88 Y XL FR  | C/B/B(72)      |            |
| 205/50 R 17 93 Y XL FR  | C/B/B(72)      |            |
| 215/40 R 17 87 Y XL FR  | C/B/B(72)      | <b>NEW</b> |
| 215/45 R 17 91 Y XL FR  | C/B/B(72)      |            |
| 215/50 R 17 95 Y XL FR  | C/B/B(72)      |            |
| 215/55 R 17 98 Y XL FR  | C/B/B(72)      |            |
| 215/60 R 17 96 V FR     | C/B/B(71)      | <b>NEW</b> |
| 225/45 R 17 94 Y XL FR  | C/B/B(72)      |            |
| 225/50 R 17 98 Y XL FR  | C/B/B(72)      |            |
| 225/55 R 17 101 Y XL FR | C/B/B(72)      |            |
| 225/60 R 17 99 V FR     | C/B/B(71)      | <b>NEW</b> |
| 225/65 R 17 102 V FR    | C/B/B(71)      | <b>NEW</b> |
| 235/45 R 17 97 Y XL FR  | C/B/B(72)      |            |
| 235/55 R 17 103 Y XL FR | C/B/B(72)      | <b>NEW</b> |
| 235/65 R 17 108 V XL FR | C/B/B(72)      | <b>NEW</b> |
| 245/45 R 17 99 Y XL FR  | C/B/B(72)      | <b>NEW</b> |

| 18 inch                 | EU tyre label* |            |
|-------------------------|----------------|------------|
| 215/55 R 18 99 V XL FR  | C/B/B(72)      | <b>NEW</b> |
| 225/40 R 18 92 Y XL FR  | D/B/B(72)      |            |
| 225/45 R 18 95 Y XL FR  | C/B/B(72)      |            |
| 225/55 R 18 98 V FR     | C/B/B(71)      | <b>NEW</b> |
| 235/40 R 18 95 Y XL FR  | C/B/B(72)      |            |
| 235/45 R 18 98 Y XL FR  | C/B/B(72)      |            |
| 235/50 R 18 101 Y XL FR | C/B/B(72)      | <b>NEW</b> |
| 235/55 R 18 104 V XL FR | C/B/B(72)      | <b>NEW</b> |
| 235/60 R 18 107 W XL FR | C/B/B(72)      | <b>NEW</b> |
| 245/35 R 18 92 Y XL FR  | D/B/B(72)      | <b>NEW</b> |
| 245/40 R 18 97 Y XL FR  | C/B/B(72)      |            |
| 245/45 R 18 100 Y XL FR | C/B/B(72)      |            |
| 255/45 R 18 103 Y XL FR | C/B/B(73)      | <b>NEW</b> |
| 255/55 R 18 109 Y XL FR | C/B/B(73)      | <b>NEW</b> |

| 19 inch                | EU tyre label* |            |
|------------------------|----------------|------------|
| 225/35 R 19 88 Y XL FR | D/B/B(72)      | <b>NEW</b> |
| 235/35 R 19 91 Y XL FR | D/B/B(72)      | <b>NEW</b> |
| 245/35 R 19 93 Y XL FR | D/B/B(72)      | <b>NEW</b> |
| 255/35 R 19 96 Y XL FR | D/B/B(73)      | <b>NEW</b> |



## EU tyre label

The EU tyre label helps consumers to decide in favour of a higher fuel efficiency class for their tyres. This can contribute to large reductions in running costs and emissions. Enhanced wet grip means greater road safety, and details of external rolling noise contributes to a reduction in traffic noise levels.

The actual fuel savings and road safety depend heavily on the behaviour of drivers, and in particular on the following:

- Eco-driving can significantly reduce fuel consumption
- Tyre pressure needs to be regularly checked to optimise fuel efficiency and wet grip.
- Stopping distances must always be respected.



### Fuel efficiency class

Less rolling noise saves fuel and cuts CO<sub>2</sub>. This property is assigned to classes A to E.



### Wet grip class

Wet grip is assigned to classes A to E. Wet grip is crucial to safe driving. For instance, the difference between class A and class E braking distances is 18 m.



### External rolling noise class

The label presents the volume in dB and the class A (quieter), B, or C (louder). The noise emitted by tyres affects the total noise levels emitted by the vehicle.



### Snow grip

The snowflake symbol confirms that the snow tested tyre keeps within the 3PMSF limits (type approval).

[platin-tyres.com](http://platin-tyres.com)

Interpneu Handelsgesellschaft mbH · An der Rossweid 23–25 · 76229 Karlsruhe · Germany  
Telefon: +49 721 6188-111 · E-Mail: [ip-export@pneu.com](mailto:ip-export@pneu.com) · [interpneu.de](http://interpneu.de)